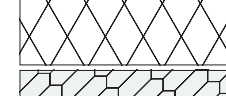
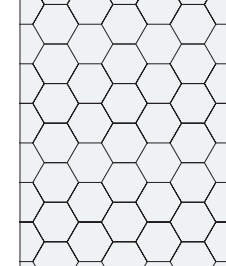
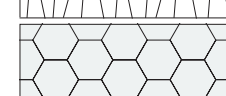
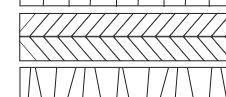
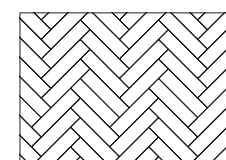
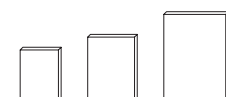
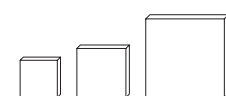
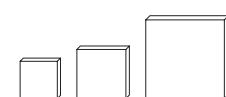
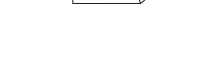
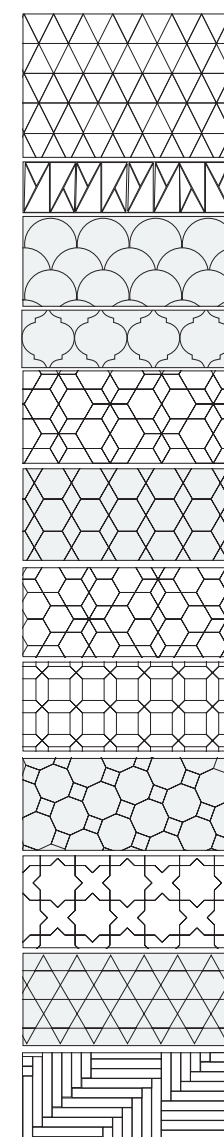


FORMATI E DATI TECNICI / SIZES AND SPECIFICATIONS / DIMENSIONS ET SPÉCIFICATIONS



DESCRIZIONE Description	SPESSORE Thickness (cm)	UNITÀ DI MISURA Units	PEZZI Pieces (m ²)	PESO Weight (Kg)	CODICE Code
Tozzetto - <i>Dutchman</i> 11x11	1,5	mq - s.m.	82	25	TZ02
Tozzetto - <i>Dutchman</i> 10,5x10,5	2,5	mq - s.m.	87	38	TZ03
Tozzetto - <i>Dutchman</i> 15x15	2,5	mq - s.m.	44	38	TZ04
Quadro - <i>Square</i> 19x19	2,5	mq - s.m.	26	40	QD05
Quadro - <i>Square</i> 25x25	2,5	mq - s.m.	16	40	QD06
Quadro - <i>Square</i> 30x30	2,6	mq - s.m.	11,1	42	QD07
Quadro - <i>Square</i> 40x40	3	mq - s.m.	6,25	46	QD08
Rettangolo - <i>Rectangle</i> 12,5x25	2,5	mq - s.m.	32	40	RT17
Rettangolo - <i>Rectangle</i> 15,5x31	2,5	mq - s.m.	20,5	40	RT18
Rettangolo - <i>Rectangle</i> 18x36	2,5	mq - s.m.	15	40	RT19
Rettangolo - <i>Rectangle</i> 20x33	2,5	mq - s.m.	15	40	RT26
Listello - <i>Listel</i> 5,5x25	1,7	mq - s.m.	66	29	LS32
Listello - <i>Listel</i> 5,5x25	2,5	mq - s.m.	66	40	LS22
Listello - <i>Listel</i> 10x40	2,5	mq - s.m.	24	40	LS40
Trapezio - <i>Trapezium</i> 16 cm	1,5	mq - s.m.	100	25	TP01
Trapezio - <i>Trapezium</i> 40 cm	2,5	mq - s.m.	20,5	40	TP40
Chevron 40x10x2,5 cm	2,5	mq - s.m.	24	40	CH40
Le Vele (4 trapezi + 1 listello) - 4 <i>Trapezium</i> - 1 <i>Listel</i> 25 cm	2	mq - s.m.	45	34	VL05
Esagono lato - <i>Hexagon</i> side 6	1,5	mq - s.m.	104	25	ES01
Esagono lato - <i>Hexagon</i> side 6	2	mq - s.m.	104	35	ES02
Esagono lato - <i>Hexagon</i> side 6	3	mq - s.m.	104	46	ES03
Esagono lato - <i>Hexagon</i> side 6 - 3D	1,5+2+3	mq - s.m.	104	31	ES3D
Esagono lato - <i>Hexagon</i> side 9,5	1,8	mq - s.m.	40	30	ES10
Esagono lato - <i>Hexagon</i> side 14	2,5	mq - s.m.	19	40	ES09
Esagono lato - <i>Hexagon</i> side 20	2,7	mq - s.m.	9	42	ES25
Rombo lato - <i>Rhomb</i> side 10,5	1,5	mq - s.m.	100	25	RB11
Rombo lato - <i>Rhomb</i> side 9,5	1,5	mq - s.m.	114	25	RB12
Rombo lato - <i>Rhomb</i> side 14	2,5	mq - s.m.	57	40	RB10
Losanga - <i>Losenge</i> 30x10	2,5	mq - s.m.	38	40	LS16



FORMATI E DATI TECNICI / SIZES AND SPECIFICATIONS / DIMENSIONS ET SPÉCIFICATIONS

DESCRIZIONE Description	SPESSORE Thickness (cm)	UNITÀ DI MISURA Units	PEZZI Pieces (m ²)	PESO Weight (Kg)	CODICE Code
Triangolo lato - <i>Triangle</i> side 9,5	1,6	mq - s.m.	194	28	TR09
Triangolo lato - <i>Triangle</i> side 12,5	1,6	mq - s.m.	138	30	TR12
Triangolo lato - <i>Triangle</i> side 20	1,8	mq - s.m.	55	30	TR20
Mix 3T 20x10x1,5	1,5	mq - s.m.	140	30	TR03
Coda di Pavone <i>Fish scale</i> diamet. 15 cm	1,7	mq - s.m.	76	29	PV15
Gocce - <i>Drops</i>	2	mq - s.m.	40	34	GO01
Rombo + Esagono a stella - <i>Star-pattern elongated hexagon</i> side 9,5 cm	1,8	mq - s.m.	56 r + 20 e/h	29	RE10
Rombo + Esagono a stella - <i>Star-pattern elongated hexagon</i> side 14 cm	2,5	mq - s.m.	27 r + 10 e/h	40	RE01
Rombo + Esagono a correre lato <i>Running bond elongated hexagon</i> side 14 cm	2,5	mq - s.m.	17 r + 14 e/h	40	RE02
Rombo + Esagono a raggio lato <i>Radius patterned elongated hexagon</i> side 14 cm	2,5	mq - s.m.	17 r + 14 e/h	40	RE08
Pavimento Rinascimento (quadro 19x19 + losanga 30x10) <i>Renaissance floor (square 19x19 + losenge 30x10)</i>	2,5	mq - s.m.	23 l + 10 q/s	40	RN20
Ottagono + Tozzetto lato 10,5 <i>Octagon tile + Dutchman</i> side 10,5	2,5	mq - s.m.	15 o + 18 t/d	40	OT21
Stella + Croce <i>Star + Cross</i> 17,6x17,6	2,5	mq - s.m.	16 s + 16 c	40	SC23
Intarsio Venezia (esagono + triangolo l.9,5) <i>Venezia composition (hexagon + triangle s.9,5)</i>	1,8	mq - s.m.	29 e/h + 56 t	30	IV10
Matite - <i>Pencils</i> 20x2,5x2,5	2,5	mq - s.m.	194	40	MT01
Gradino - <i>Step</i> 15,5x31	2,5	pz - pc.	-	2	GR11
Gradino - <i>Step</i> 30x30	2,6	pz - pc.	-	4	GR30
Gradone - <i>Step</i> 20x34	4	pz - pc.	-	4,5	GR33
Gradino angolare - <i>Corntile</i> 15,5x31	2,5	pz - pc.	-	2	AN24
Gradino angolare - <i>Corntile</i> 30x30	2,6	pz - pc.	-	4	AN30
Battiscopa - <i>Skirting</i> 8,5x25	1,2	pz - pc.	-	0,6	BT25
Toro lineare - <i>Linear torus</i> 11x2,5	2,5	pz - pc.	-	-	TR01
Tozzetto con toro - <i>Dutchman with torus</i>	1,5 / 2,5	pz - pc.	-	-	TZTR
Tozzetto becco - <i>Dutchman with half torus</i>	1,5 / 2,5	pz - pc.	-	-	TZBC